

Call
Absolute Hearing Solutions
For Hearing Aid Details!
614-452-4280

www.absolutehearingsolutions.com

DOLBY AUDIO™

Manufactured under license from Dolby Laboratories.

Dolby, Dolby Audio, and the double-D symbol are trademarks of Dolby Laboratories.



Manufacturer:

Sonova AG

Laubisrütistrasse 28

CH-8712 Stäfa

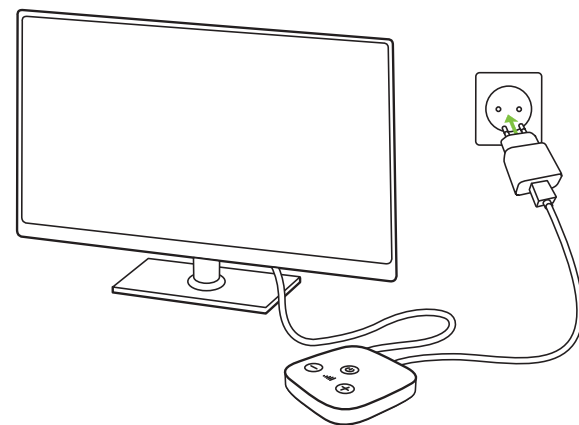
Switzerland

029-3235/V2.00/2018-06/na © 2018 Sonova AG All rights reserved



TV Connector

How to setup | Installationsanleitung
Guide d'installation | Guía de instalación |
Guida all'istallazione



1

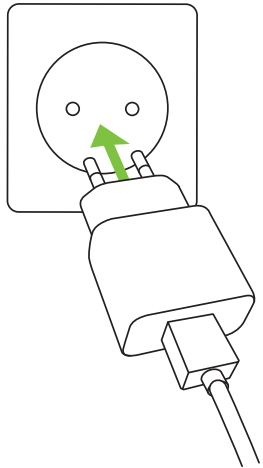
Plug power supply into mains.

Netzteil an Steckdose anschliessen.

Branchez l'adaptateur secteur dans une prise électrique.

Enchufe la fuente de alimentación a la toma de corriente.

Inserire la presa di corrente.



Absolute Hearing Solutions LLC

absolutehearing@att.net

750 Cross Pointe Road Suite F
Gahanna, Ohio 43230

Phone: 614-452-4200
Toll Free: 888-803-2159
Fax: 614-577-0461

www.absolutehearingsolutions.com

2

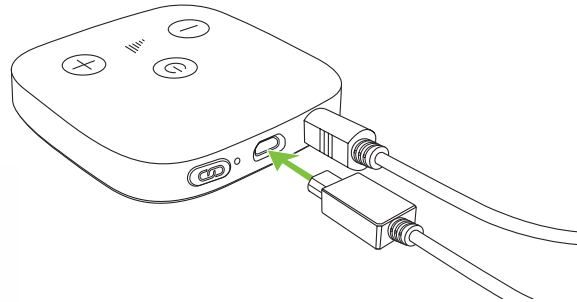
Insert USB cable (small plug) into TV Connector.

USB Kabel (kleiner Stecker) an TV Connector anschliessen.

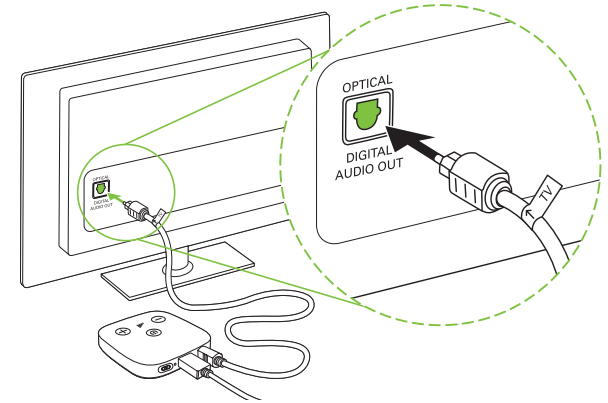
Branchez le câble USB (fiche la plus petite) au TV Connector.

Conecte el cable USB (conector pequeño) de la TV Connector.

Connettere il cavo USB (connettore più piccolo) al TV Connector.



3



VIDEO

www.phonak.com/TVConnector-install