

# RIC

(Receiver-In-Canal)

Call

Absolute Hearing Solutions

For Hearing Aid Deals

614-452-4280

[www.absolutehearingsolutions.com](http://www.absolutehearingsolutions.com)

## Select Hearing Instrument



Size 10 Battery - Yellow



Size 312 Battery - Brown



Size 312 Battery - Brown



Size 312 Battery - Brown



Size 13 Battery - Orange



Size 13 Battery - Orange

## Select Instrument Controls

- Automatic Volume Control p. 16
- Adjustable Volume Control p. 16
- Multimemory p. 18
- Combined Volume and Multimemory Control p. 18

## Overview

RIC 10 Overview .....	4
RIC 312 Overview .....	5
RIC 13 Overview .....	8

## Preparation

Batteries .....	10
Battery Indicators .....	12
Tamper Resistant Battery Compartment .....	12
Insertion and Removal .....	14

## Operation

On & Off .....	16
Volume Control .....	16
Volume Settings .....	17
Multimemory .....	18
Telephone Use .....	19
Manual Switching .....	20
Direct Audio Input (DAI) .....	22

## Accessories

Wireless Accessories .....	24
----------------------------	----

## Hearing System Care

Instrument Care .....	25
Hear Clear .....	25
Service and Repair .....	26
Troubleshooting Guide .....	27

## Tips for Better Communication

For You .....	28
For Your Family and Friends .....	29

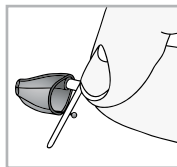
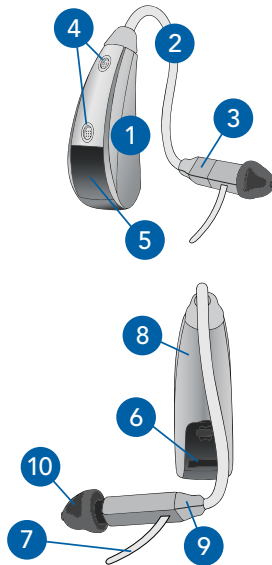
## Safety Information

FDA Information .....	32
FCC Information .....	34

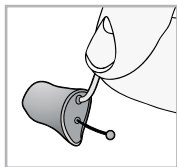
### Features, Controls and Identification

Your hearing system controls include:

1. Hearing Instrument
2. Cable
3. Receiver
4. Microphones
5. Control Surface Switch
6. Battery Compartment (on/off control), Location of serial number, Location of left/right side device indicator
7. Retention Lock
8. Location of manufacturer's name and model name
9. Location of left/right side receiver indicator
10. Instant Fit Earbud
11. Custom Earmold (optional)
12. RIC Custom Power Earmold (optional)



11

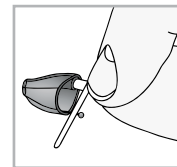
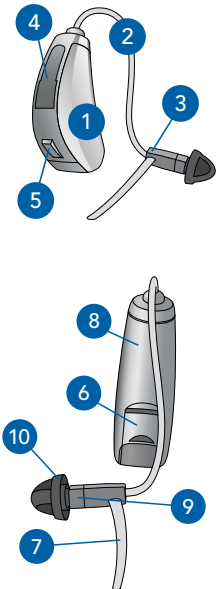


12

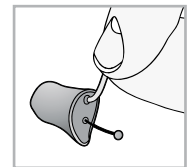
### Features, Controls and Identification

Your hearing system controls include:

1. Hearing Instrument
2. Cable
3. Receiver
4. Microphones
5. Push Button Switch
6. Battery Compartment (on/off control), Location of serial number, Location of left/right side device indicator
7. Retention Lock
8. Location of manufacturer's name and model name
9. Location of left/right side receiver indicator
10. Instant Fit Earbud
11. Custom Earmold (optional)
12. RIC Custom Power Earmold (optional)



11

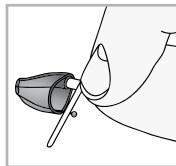
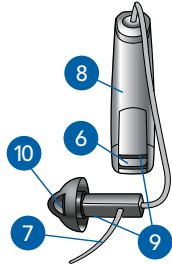
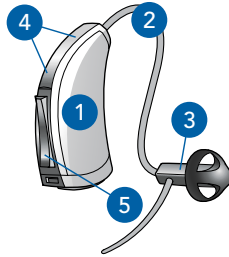


12

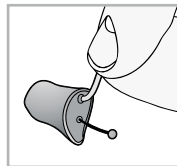
**Features, Controls and Identification**

Your hearing system controls include:

1. Hearing Instrument
2. Cable
3. Receiver
4. Microphones
5. Rocker Switch
6. Battery Compartment (on/off control), Location of serial number, Location of left/right side device indicator
7. Retention Lock
8. Location of manufacturer's name and model name
9. Location of left/right side receiver indicator
10. Instant Fit Earbud
11. Custom Earmold (optional)
12. RIC Custom Power Earmold (optional)



11

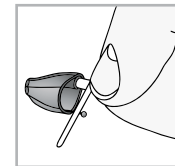
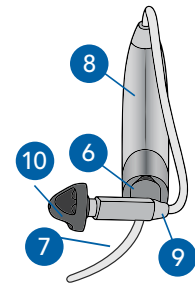
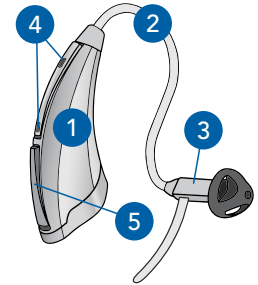


12

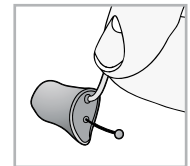
**Features, Controls and Identification**

Your hearing system controls include:

1. Hearing Instrument
2. Cable
3. Receiver
4. Microphones
5. Push Button Switch
6. Battery Compartment (on/off control), Location of serial number
7. Retention Lock
8. Location of manufacturer's name and model name
9. Location of left/right side receiver indicator
10. Instant Fit Earbud
11. Custom Earmold (optional)
12. RIC Custom Power Earmold (optional)



11

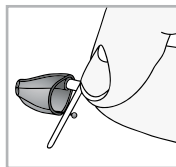
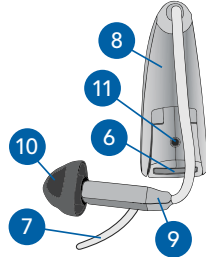


12

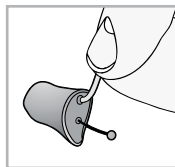
**Features, Controls and Identification**

Your hearing system controls include:

1. Hearing Instrument
2. Cable
3. Receiver
4. Microphones
5. Control Surface Switch
6. Battery Compartment (on/off control), Location of serial number
7. Retention Lock
8. Location of manufacturer's name and model name
9. Location of left/right side receiver indicator
10. Instant Fit Earbud
11. Location of left/right side device indicator
12. Custom Earmold (optional)
13. RIC Custom Power Earmold (optional)



12

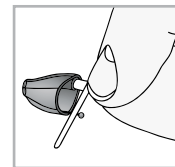
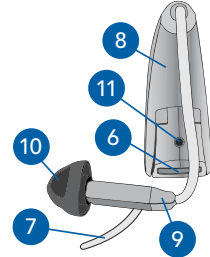
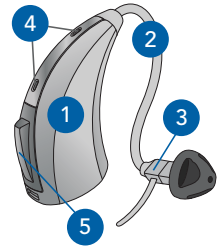


13

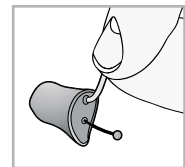
**Features, Controls and Identification**

Your hearing system controls include:

1. Hearing Instrument
2. Cable
3. Receiver
4. Microphones
5. Push Button Switch
6. Battery Compartment (on/off control), Location of serial number
7. Retention Lock
8. Location of manufacturer's name and model name
9. Location of left/right side receiver indicator
10. Instant Fit Earbud
11. Location of left/right side device indicator
12. Custom Earmold (optional)
13. RIC Custom Power Earmold (optional)



12



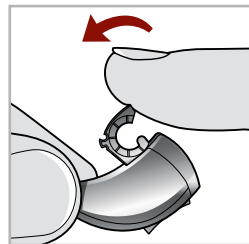
13

## Batteries

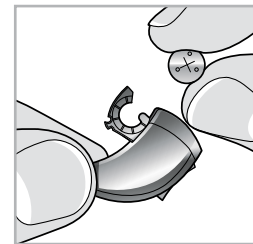
Your hearing system uses a battery as its power source. This battery size can be identified by the orange (13), brown (312), or yellow (10) color code on the packaging.

### To insert or replace the battery:

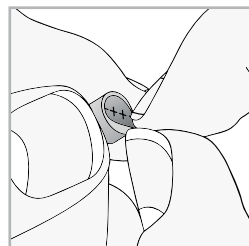
1. Use the nail grip on the battery door.
2. Open the battery door gently and remove the old battery.
3. Remove the tab from the new battery.
4. Line up the battery's "+" sign (flat side of the battery) with the "+" on the battery door.
5. Close the battery door.



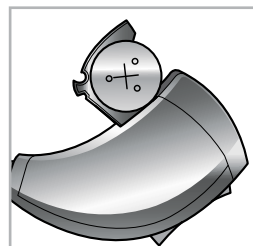
1



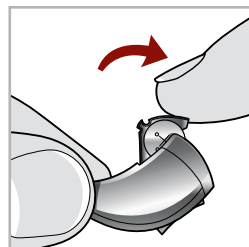
2



3



4



5

## Battery Indicators

An indicator will sound when the battery voltage is low. You have approximately 5 minutes\* to replace the battery. An indicator will sound just before the battery stops working.

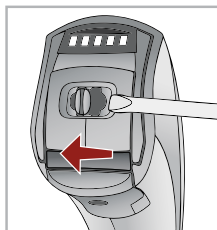
\* Actual time between low battery indicator and shut down will vary depending on environmental noise levels and brand of battery used.

- My hearing instrument has a tamper resistant battery compartment. See below.

## Tamper Resistant Battery Compartment

### To lock the battery door:

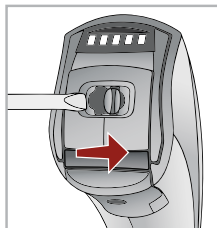
Use an appropriate tool to slide the recessed switch to the left until it “clicks” and the colored mark is visible.



### To unlock the battery door:

Slide the recessed switch to the right until it “clicks” and the colored mark disappears.

Locking the door is not required for operation.






## Helpful Hints

- NEVER FORCE THE BATTERY DOOR SHUT; this could result in serious damage; if the door will not close securely, check that the battery is inserted correctly.
- Do not open the battery door too far or damage is likely to occur.
- Dispose of used batteries immediately in the proper waste or recycling container.
- Batteries vary in size and performance. Your hearing care professional is your best source for lifespan estimates and verification that you are using the proper size and type.

### Warnings

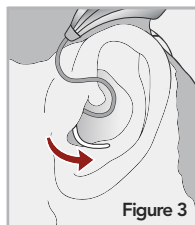
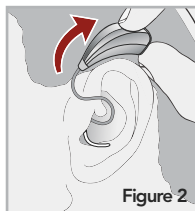
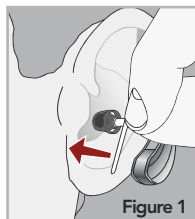
Batteries are dangerous if swallowed. To help prevent the accidental ingestion of batteries:

-  Keep out of reach of children and pets
-  Check your medications before taking them – batteries have been mistaken for pills
-  Never put batteries in your mouth, as they can easily be swallowed
-  **National Button Battery Ingestion Hotline: 202-625-3333**

## Insertion and Removal

### To insert the earbud or earmold:

1. Hold the cable at the bend in front of the receiver with your thumb and forefinger. Gently insert the receiver into your ear canal (fig. 1).
2. Wrap the hearing instrument over the top of your ear, carefully placing it behind your ear (fig. 2).
3. Place the retention lock inside the bowl of your ear (fig. 3).



### To remove the earbud or earmold:

1. Remove the retention lock from the bowl of your ear.
2. Remove the hearing instrument from behind your ear.
3. Grasp the receiver with your thumb and forefinger. Gently pull out of your ear canal.

Do not pull with the hearing instrument case as this may damage the connection.



## Helpful Hints

- Minor irritation and inflammation may occur as your ear becomes accustomed to having an object in it; if so, please contact your hearing care professional.
- If an actual allergic reaction occurs, alternative earmold materials are available; contact your hearing care professional.
- Severe swelling, discharge from the ear, excessive wax, or other unusual conditions warrant immediate consultation with a physician.



### On & Off

**To turn ON:** Insert a battery and completely close the battery door.

**To turn OFF:** Open the battery door until the battery is no longer touching the battery contacts.

Your instrument has a Power-On delay and may require a few seconds to power on. You may hear a tone series indicating that your device is fully powered on.

### Volume Control

#### Automatic Volume Control

Your hearing system has been set to a specific volume level by your hearing care professional. If sounds are generally too loud or too soft, please contact your hearing care professional for advice and adjustment.

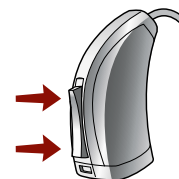
#### Adjustable Volume Control

##### Control Surface/Push Button Volume Control

Your hearing system uses the control surface/push button to control volume. To change volume, press then release the control surface/push button.

### Rocker Switch Volume Control

Your hearing system uses the rocker switch to control volume. To increase volume, press then release the top part of the switch. To decrease volume, press then release the bottom part of the switch.



### Volume Settings

Some hearing systems can be set for the Right device to increase the volume and the Left device to decrease the volume. Ask your hearing care professional if this setting would benefit you.

Volume Level	Tone
Level 5 <b>(More volume)</b>	Five beeps plus tone
Level 4	Four beeps
Level 3 <b>(Power on volume level)</b>	Three beeps
Level 2	Two beeps
Level 1 <b>(Less volume)</b>	One beep plus tone

### Multimemory

Your hearing care professional can set up to four hearing programs for you. These additional programs are accessed by pressing the control surface/push button/rocker switch.

When you press the control surface/push button/rocker switch, you may hear an alert indicating the device has changed to the next program. Ask your hearing professional about your specific hearing programs.

### Combined Volume and Multimemory Control

Your hearing device is set up to adjust volume and programs. To adjust volume, press then release the switch. To change programs, press and hold the switch. The hearing aid will cycle through the programs and present indicators. Release the switch when you are at the desired program.

### Telephone Use

Your hearing instruments are equipped with tools to help you effectively communicate on the telephone. Ask your hearing professional about your telephone solution.

My hearing instruments have the following telephone setting(s):

- Automatic Telephone. See below.
- Automatic Telecoil. See below.
- Telecoil and Manual Switching.  
(Program # \_\_\_\_\_).

### Automatic Telephone and Automatic Telecoil

These options activate the telephone response automatically when used with a hearing aid compatible telephone. To use, place the telephone receiver on your ear as you normally would and the hearing instrument will select the telephone setting. It might be necessary to move the telephone receiver slightly to find the best reception.

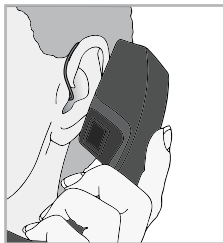
Once the telephone is removed from the ear, the hearing instrument will switch back to the normal listening mode.

**NOTE:** Consult with your hearing professional if your device does not seem to switch to the telephone setting automatically.

### Manual Switching

Manual switching allows you to switch the devices to telephone mode when needed.

Ask your hearing professional which program you should access for manual telephone use.



### General Telephone Use

Some hearing instruments work best by holding the phone close to, but not fully covering your ear. In some instances, if you encounter whistling (feedback), tilt the receiver at an angle until the whistling stops. Additionally, the hearing instrument in the non-phone ear (ear opposite the phone) may switch to a telephone setting to reduce background sounds. Your hearing professional can provide instructions and techniques for your specific needs.



**DISCLAIMER** – Some hearing aid users have reported a buzzing sound in their hearing aids when they are using cell phones, indicating that the cell phone and hearing aid may not be compatible. According to the ANSI C63.19 standard (ANSI C63.19-2007 American National Standard Methods of Measurement of Compatibility Between Wireless Communications Devices and Hearing Aids), the compatibility of a particular hearing aid and cell phone can be predicted by adding the rating for the hearing aid immunity to the rating for the cell phone emissions. For example, the sum of a hearing aid rating of 2 (M2) and a telephone rating of 3 (M3) would result in a combined rating of 5. Any combined rating that equals at least 5 would provide “normal use”; a combined rating of 6 or greater would indicate “excellent performance.”

The immunity of this hearing aid is at least M2/T2. The equipment performance measurements, categories and system classifications are based upon the best information available but cannot guarantee that all users will be satisfied.

**NOTE:** The performance of individual hearing aids may vary with individual cell phones. Therefore, please try this hearing aid with your cell phone or, if you are purchasing a new phone, be sure to try it with your hearing aid prior to purchase. For additional guidance, please ask your cell phone provider for the booklet entitled “Hearing Aid Compatibility with Digital Wireless Cell Phones.”

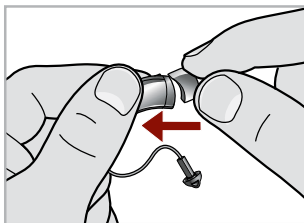
### Direct Audio Input (DAI)

- My hearing system is set up for DAI use.
- My hearing system is not set up for DAI use.  
See page 24.

Your hearing system has full direct audio input (DAI) capability. This allows you to connect your hearing system to an electronic sound source such as a wireless FM system, computer audio or an MP3 player. DAI can improve communication and sound quality when reverberation, distance and background noise compete with what you want to hear.

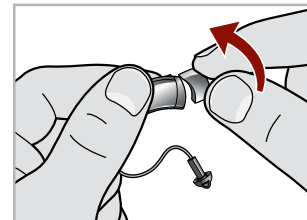
#### To attach the DAI shoe:

Snap the DAI shoe on the bottom of the RIC.



#### To access the battery with the DAI shoe attached:

Hold the RIC and DAI shoe and press the lower part of the DAI shoe, then open the battery door.



#### To remove the DAI shoe:

Turn the RIC on the side. Grasp the RIC in one hand and the DAI shoe in the other. Gently bend at the seam between the DAI shoe and the hearing aid.

There are many FM systems available to help improve communication in challenging environments. Ask your hearing healthcare professional about personal FM systems.

### Wireless Accessories\*

There are several wireless accessories that allow you to control and maximize the full potential of your hearing system. These include a remote control as well as wireless connection to your cell phone and entertainment system. Consult with your hearing professional to determine if your hearing aids have wireless capabilities and which accessories may be best for you.

\*Wireless accessories are only compatible with hearing aids that have wireless technology.

### Instrument Care

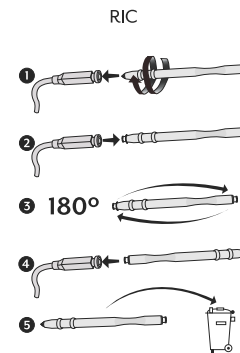
Do your best to keep your hearing instrument clean at all times. Heat, moisture and foreign substances can result in poor performance.

- Use a cleaning brush or soft cloth to clean debris from around the switches, microphone, and battery compartment; inspect the receiver, earbud or eartip and Wax Guard regularly.
- Never use water, solvents, cleaning fluids or oil to clean your instrument.

Your hearing care professional can provide further information on additional maintenance procedures for your hearing system if needed.

### Hear Clear™

The Hear Clear exclusive earwax protection system uses disposable wax guards. The innovative wax guards prevent earwax accumulation in the hearing aid receiver.



### Helpful Hints

- When not wearing your hearing system, open the battery door to allow any moisture to evaporate.
- When not in use, remove the batteries completely; place your hearing system in the storage container and store:
  - In a dry, safe place
  - Away from direct sunlight or heat to avoid extreme temperatures
  - Where you can easily find them
  - Safely out of reach of pets and children
- Do not take apart your hearing instruments or insert the cleaning tools inside them.

### Service and Repair

If, for any reason, your hearing system does not operate properly, do NOT attempt to fix it yourself. Not only are you likely to violate any applicable warranties or insurance, you could easily cause further damage.

Should your hearing system fail or perform poorly, check the guide on the next page for possible solutions. If problems continue, contact your hearing care professional for advice and assistance. Many common problems may be solved right in your hearing care professional's office or clinic.

### Troubleshooting Guide

SYMPTOM	POSSIBLE CAUSES	SOLUTIONS
Not Loud Enough	Low battery	Replace battery
	Blocked earmold/tubing/earbud	Clean or replace Wax Guard as needed
	Hearing change	Contact your hearing care professional
	Debris buildup	Clean both microphone and receiver with brush
Inconsistent Performance	Low battery	Replace battery
	Blocked earmold/tubing/earbud	Clean or replace Wax Guard as needed
Unclear, Distorted Performance	Low battery	Replace battery
	Blocked earmold/tubing/earbud	Clean or replace Wax Guard as needed
	Defective hearing instrument	Contact your hearing care professional
Dead	Low battery	Replace battery
	Blocked earmold/tubing	Clean or replace Wax Guard as needed
	Crimped tubing	Contact your hearing care professional

Your hearing care professional will recommend an appropriate schedule to help you adapt to your new hearing system. It will take practice, time and patience for your brain to adapt to the new sounds that your hearing system provides. Hearing is only part of how we share thoughts, ideas and feelings. Reading lips, facial expressions and gestures can help the learning process and add to what amplification alone may miss.

Please review the following simple communication tips:

### For You

- Move closer to and look at the speaker
- Sit face-to-face in a quiet room
- Try different locations to find the best place to listen
- Minimize distractions
- Background noises may be frustrating at first; remember, you have not heard them for a while
- Let others know what you need; keep in mind that people cannot “see” your hearing loss
- Develop realistic expectations of what your hearing instruments can and cannot do
- Better hearing with hearing instruments is a learned skill combining desire, practice and patience

### For Your Family and Friends

Your family and friends are also affected by your hearing loss. Request that they:

- Get your full attention before beginning to speak
- Look at you or sit face-to-face in a quiet room
- Speak clearly and at a normal rate and level; shouting can actually make understanding more difficult
- Rephrase rather than repeat the same words; different words may be easier to understand
- Minimize distractions while speaking

### Safety Information

**INTENDED USE:** An air conduction hearing aid is a wearable sound-amplifying device that is intended to compensate for impaired hearing. Hearing aids are available in multiple gain/output levels appropriate to treat hearing losses ranging from mild to profound.

Your hearing instruments are designed to comply with the most stringent Standards of International Electromagnetic Compatibility. However, it is still possible that you may experience interference caused by power line disturbances, airport metal detectors, electromagnetic fields from other medical devices, radio signals and electrostatic discharges.

If you use other medical devices or wear implantable medical devices such as defibrillators or pacemakers and are concerned that your hearing instruments might cause interference with your medical device, please contact your physician or the manufacturer of your medical device for information about the risk of disturbance.

Your hearing instruments should not be worn during an MRI procedure or in a hyperbaric chamber. Your hearing instruments are not formally certified to operate in explosive atmospheres such as may be found in coal mines or certain chemical factories. Your hearing instruments are classified as a Type B applied part under the IEC 60601-1 medical device standard.

Your hearing instruments should be stored within the temperature and humidity ranges of -40°C (-40°F) to +60°C (140°F) and 10%-95% rH.

Your hearing instruments are designed to operate beyond the range of temperatures comfortable to you, from very cold up to 50°C (122°F).

### Use on Aircrafts\*

The optional wireless capabilities that may be featured in your hearing instruments should not be used on an aircraft unless specifically permitted by the flight personnel. Your hearing care professional can enable a special program that allows your hearing aids to work without wireless functionality.

### International Use\*

Your hearing instruments are approved to operate at a radio frequency that is specific to your country or region and might not be approved for use outside your country or region. Be aware that operation during international travel may cause interference to other electronic devices, or other electronic devices may cause interference to your hearing instruments.

*\*Applies to wireless hearing instruments only*



## Required Information

The following additional information is provided in compliance with U.S. Food and Drug Administration (FDA) regulations:

**WARNING TO HEARING AID DISPENSERS.** A hearing aid dispenser should advise a prospective hearing aid user to consult promptly with a licensed physician (preferably an ear specialist) before dispensing a hearing aid if the hearing aid dispenser determines through inquiry, actual observation, or review of any other available information concerning the prospective user, that the prospective user has any of the following conditions:

- i. Visible congenital or traumatic deformity of the ear.
- ii. History of active drainage from the ear within the previous 90 days.
- iii. History of sudden or rapidly progressive hearing loss within the previous 90 days.
- iv. Acute or chronic dizziness.
- v. Unilateral hearing loss of sudden or recent onset within the previous 90 days.
- vi. Audiometric air-bone gap equal to or greater than 15 decibels at 500 Hertz (Hz), 1,000 Hz and 2,000 Hz.
- vii. Visible evidence of significant cerumen accumulation or a foreign body in the ear canal.
- viii. Pain or discomfort in the ear.

**IMPORTANT NOTICE FOR PROSPECTIVE HEARING AID USERS.**

Good health practice requires that a person with a hearing loss have a medical evaluation by a licensed physician (preferably a physician who specializes in diseases of the ear) before purchasing a hearing aid. Licensed physicians who specialize in diseases of the ear are often referred to as otolaryngologists, otologists, or otorhynolaringologists. The purpose of the medical evaluation is to assure that all medically treatable conditions that may affect hearing are identified and treated before the hearing aid is purchased.

Following the medical evaluation, the physician will give you a written statement that states that your hearing loss has been medically evaluated and that you may be considered a candidate for a hearing aid. The physician will refer you to an audiologist or hearing aid dispenser, as appropriate, for a hearing aid evaluation.

The audiologist or hearing aid dispenser will conduct a hearing aid evaluation to assess your ability to hear with and without a hearing aid. The hearing aid evaluation will enable the audiologist or dispenser to select and fit a hearing aid to your individual needs.

If you have reservations about your ability to adapt to amplification, you should inquire about the availability of a trial-rental or purchase-option program. Many hearing aid dispensers now offer programs that permit you to wear a hearing aid for a period of time for a nominal fee after which you may decide if you want to purchase the hearing aid.

Federal law restricts the sale of hearing aids to those individuals who have obtained a medical evaluation from a licensed physician. Federal law permits a fully informed adult to sign a waiver statement declining the medical evaluation for religious or personal beliefs that preclude consultation with a physician. The exercise of such a waiver is not in your best health interest and its use is strongly discouraged.

A hearing aid will not restore normal hearing and will not prevent or improve a hearing impairment resulting from organic conditions. Use of a hearing aid is only part of hearing habilitation and may need to be supplemented by auditory training and instruction in lip reading. In most cases infrequent use of a hearing aid does not permit a user to attain full benefit from it.

**CHILDREN WITH HEARING LOSS.** In addition to seeing a physician for a medical evaluation, a child with a hearing loss should be directed to an audiologist for evaluation and rehabilitation since hearing loss may cause problems in language development and the educational and social growth of a child. An audiologist is qualified by training and experience to assist in the evaluation and rehabilitation of a child with a hearing loss.

**REGULATORY NOTICES**

**RIC 312**

FCC ID: EOA- 3Ser312D

IC ID: 6903A- 3Ser312D

FCC ID: EOA-3Ser312

IC ID: 6903A-3Ser312

FCC ID: EOA-IRIS-HAS

IC ID: 6903A-IRISHA

**RIC 13**

FCC ID: EOA-IRIS-HAS

IC ID: 6903A-IRISHA

**FCC NOTICE**

This device complies with part 15 of the FCC rules and with RSS-210. Operation is subject to the following two conditions: (1) This device may not cause harmful interference, and (2) this device must accept any interference received, including interference that may cause undesired operation of the device.

Note: The manufacturer is not responsible for any radio or TV interference caused by unauthorized modifications to this equipment. Such modifications could void the user's authority to operate the equipment.

Hereby, Starkey Hearing Technologies declares that the products listed above are in compliance with the essential requirements and other relevant provisions of Directive 1999/5/EC. A copy of the Declaration of Conformity can be obtained from the below addresses.

**Starkey Hearing Technologies**

6700 Washington Ave. South  
Eden Prairie, MN 55344 USA



Wm. F. Austin House, Bramhall Technology Park  
Pepper Road, Hazel Grove, Stockport SK7 5BX  
United Kingdom



Waste from electronic equipment  
must be handled according to local  
regulations



---

---

---

---

---

---

---

---

---

---

---

---

---

---

---

---

---

---

---

---

---

---

---

---

---

---

---

---

---

---

---

---

---

---

---

---

---

---

---

---

---

---

---

---

---

---

---

---

---

---

---

---

---

---

---

---

---

---

---

---

---

---

---

---

---

---

---

---

---

---

---

---

---

---

---

---

---

---

---

---

---

---

---

---

---

---

---

---

---

---

---

---

---

---

---

---

---

---

---

---



# Absolute Hearing Solutions

## **Absolute Hearing Solutions LLC**

absolutehearing@att.net

750 Cross Pointe Road Suite F  
Gahanna, Ohio 43230

Phone: 614-452-4280  
Toll Free: 888-803-2159  
Fax: 614-577-0481

[www.absolutehearingsolutions.com](http://www.absolutehearingsolutions.com)